

# Sheeting Cases according to DIN standard 1045-1



**NEW**



## Toothed Groove

Improvement of bonding quality and high precision in the definition of shearing force transfer – these are the pros of the new DIN standard tubular elements made by wbr.

This provides safety in planning and installation, since the interlocked joint allows for the use of the full roughness parameter in calculation. Almost all standard cross-sectional shapes of the finished tubular formwork elements do not require stiffening, which is another advantage of the new trapezoid profile.

### Material

Bright steel

### Dimensions

Preferably available inside dimensions from 350 to 1500 mm. Length (height) according to specification. Please note that it may be necessary to increase the dimension for the intrusion of the part into the unhardened concrete.

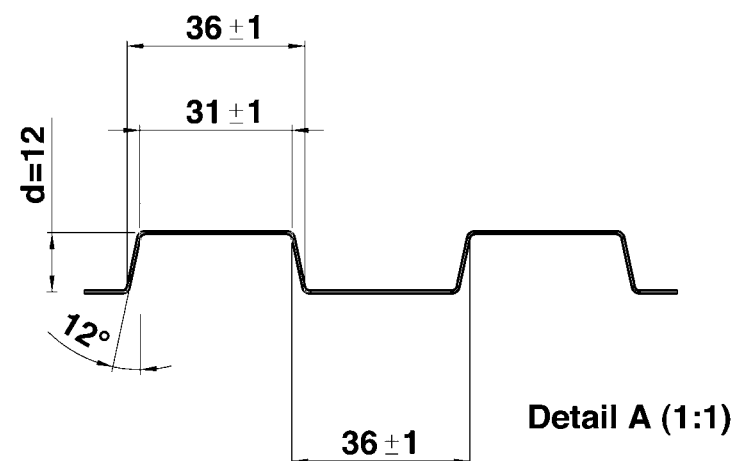
### Tolerances

In diameter  $\pm 5$ mm, in length  $\pm 15$  mm

## Profile



**Detail A**



Surface according to DIN 1045-1	Roughness parameter $\beta_{ct}$	Coefficient of friction $\mu$
fine groove	~ 0,0	~ 0,5
smooth groove	~ 1,4	~ 0,6
coarse groove	~ 2,0	~ 0,7
toothed groove	~ 2,4	~ 1,0